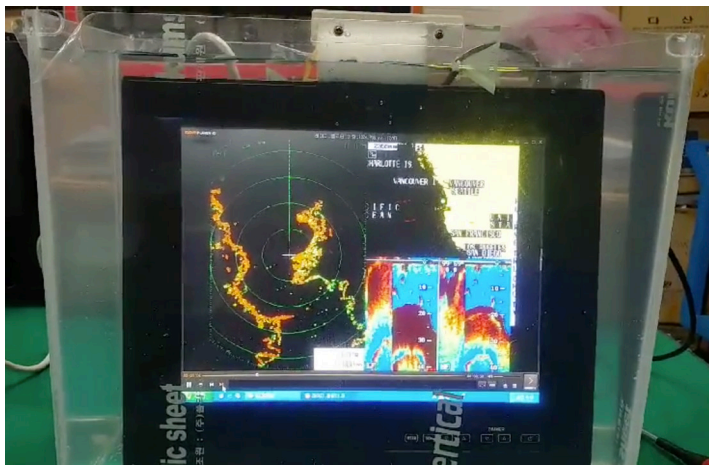


# EXTREAM SERIES

100% SEALED IP68 WATER-PROOF  
SUNLIGHT READABLE DISPLAYS

**EXTREME (XT) Series** by Seatronx is a ruggedized IP68 all weatherproof series of displays for extremely harsh and demanding environments where **EXTREME** protection is very important. The **XT Series** is a slim compact, lightweight design, the **XT SERIES** housings are made from a milled aluminum alloy to create a ruggedized enclosure along with the IP68 sealed connectors to meet the demand of IP68 applications.

**XT Series** by Seatronx are multipurpose displays that feature the unmatched quality and reliability that you can depend on. These displays are ideal for rugged application such as military, industrial and marine environments.



*Testing XT Series IP68 waterproof rating by submerging it in a tank full of water.*

## STANDARD FEATURES INCLUDE:

- High resolution 1000nits LED display
- IP68/NEMA6- 100% sealed enclosure rating
- LED back light system (1,000:1 Dimming Ratio)
- Soft touch dimming adjustment to any light (0nit to Full brightness)
- High ambient contrast ratio
- Accept wide range resolution VGA to UXGA
- True DC operation system with noise filter 9-36VDC
- 3 ways of mounting one unit (VESA, Panel and Bracket mount)
- Size: 8.4", 10.4", 12.1", 15", 17", 19".

## OPTIONAL FEATURES

- Resistive Touch screen (USB or RS232)
- USB Pass through with IP68 sealed connectors



Our Vision is Your Vision

REV 1.02.11.21

**SPECIFICATIONS:**

LCD Size (Model no.)	Resolution	cd/m2	View Angle	Contrast Ratio	Power Consumption
8.4" (XT-8)	SVGA (800×600)	1,000 cd/m2	160° (H) x 160° (V)	900:1	18 Watts
10.4"(XT-10)	XGA (1,024×768)	1,000 cd/m2	160° (H) x 130° (V)	700:1	20 Watts
12.1"(XT-12)	XGA (1,024×768)	1,000 cd/m2	160° (H) x 160° (V)	1,200:1	22 Watts
15.0"(XT-15)	XGA (1,024×768)	1,000 cd/m2	160° (H) x 160° (V)	800:1	26 Watts
17.0" (XT-17)	SXGA(1,280×1,024)	1,000 cd/m2	160° (H) x 160° (V)	1,000:1	30Watts
19.0" (XT-19)	SXGA(1,280×1,024)	1,000 cd/m2	170° (H) x 160° (V)	1,000:1	34Watts

**Technical Specifications**

Display	8-bit, 16.7 Million colors
Dimming Ratio	1,000:1
Signal Input	RGB(HD15), DVI, HDMI (Optional: Display portx1)
Power Input	DC10-38V(DC12V,24V,28V nominal usage)
Housing	Machined Aluminum alloy, Black powder coated
Mounting	VESA, Flush, Panel, U- Bracket mount(optional)
DC Power Input	DC10-38V(DC12V,24V,28Vnominal usage) Harsh duty variable power supply
Power Conditioning	Protected against Internal short circuit, load dump, over voltage, reverse polarity

**Environmental Specifications**

IP Rating	IP68 (NEMA 6 Submersible)
Operating Temperature	-10°C to 60°C (-14°F to 140°F)
Storage Temperature	-30°C to 80°C (-40°F to 176°F)
Humidity	0-100%
Shock	1.5G RMS
Vibration	5G
Altitude	10,000 ft.
EMI/EMC	Meet to UL, FCC standard level(Not certificated)
Electronics Circuit	RoHS Compliant

**ORDERING INFORMATION:**

Model #	Description
XT-8	8.4" SVGA (800×600) Sunlight readable display
XT-10	10.4" XGA (1,024×768) Sunlight readable display
XT-12	12.1" XGA (1,024×768) Sunlight readable display
XT-15	15.0" XGA (1,024×768) Sunlight readable display
XT-17	17.0" SXGA(1,280×1,024) Sunlight readable display
XT-19	19.0" SXGA(1,280×1,024) Sunlight readable display
<b>Options</b>	
-TUSB	Add -TUSB to part number for USB Touchscreen
-T232	RS-232 Touchscreen
EXAMPLE: XT-8-TUSB = 8.4" Sunlight readable display with USB Touchscreen	



USA: (800) 607-1460  
 TEL: (772) 418-5035  
 EMAIL: Info@Seatronx.com  
 WEBSITE: www.seatronx.com