

SXT Series

Rugged Sunlight Readable Marine Displays



Our Vision is Your Vision



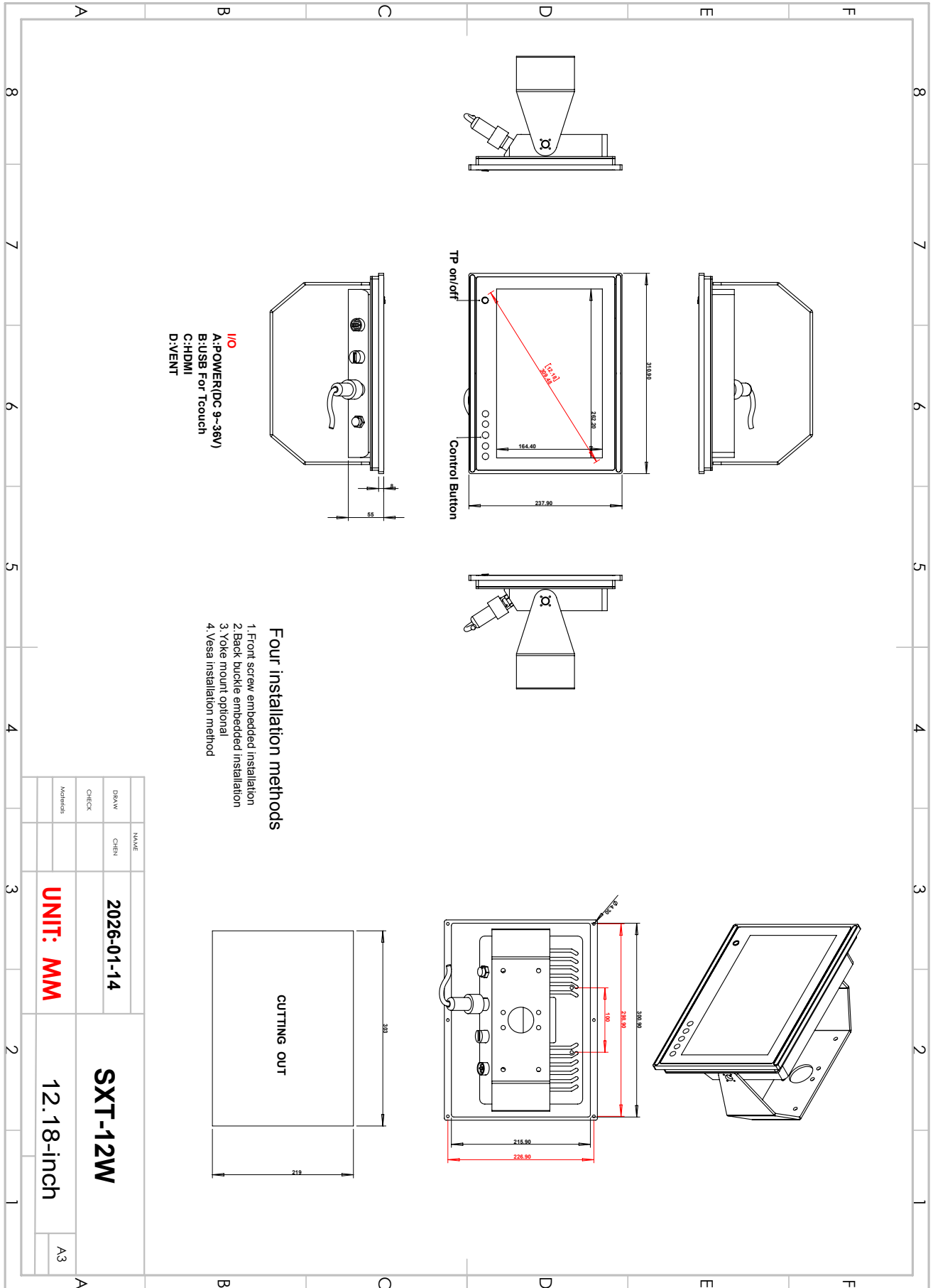
Engineered for demanding marine applications, the SXT Series Rugged Sunlight-Readable Touch Monitors deliver outstanding visibility, durability, and touch performance in harsh environments. Featuring a high-brightness optically bonded display, full IP66/67 waterproof sealing, and a robust die-cast aluminum enclosure, these monitors ensure reliable operation in any weather or lighting condition.

Key Features

- Sunlight-readable LCD with high brightness; fully viewable with polarized sunglasses.
- Rugged, fanless, die-cast aluminum enclosure with integrated heatsink; easy-to-clean flat surface.
- Full IP66/67 waterproof sealing with anti-corrosive rubber for 360° protection.
- 10-point PCAP touchscreen with anti-glare treatment and touch on/off control.
- Integrated OSD menu accessible directly through the touchscreen interface.
- Optical bonding with UV-resistant materials for enhanced clarity and durability.
- Shock resistant up to 20G, ideal for high-vibration marine environments.
- Certifications: CE, FCC, RoHS.

Part Number	SXT-12WHD	SXT-16W
Display	12.1" Widescreen Display	15.6" Widescreen Display
Cell Type/Glass Surface	TFT	TFT
Aspect Ratio	16:10	16:9
Active Area/ Pixel Pitch	258.048(H) × 161.28(V)mm/0.1344×0.1344mm	344.16(H) × 193.59(V)mm/0.17925×0.17925mm
Native Resolution/ Colors	1920×1200/16.7M	1920×1080/16.2M
Brightness/ Contrast	1000cd/m ³ /800:1	1500cd/m ³ /800:1
Response Time/ Viewing Angle	30ms/80/80/80/80	13/12ms/89/89/89/89
Light Source	LED backlight with 50000hours'lifetime	LED backlight with 50000 hours' lifetime
Input Signals	HDMI input (Waterproof M12 Connector)	HDMI input (Waterproof M12 Connector)
Convenient Features	Menu Adjustment, Touch on/off, Volume Control	Menu Adjustment, Touch on/off, Volume Control
Power Source	DC 9~36V (Isolated DC-DC Voltage Regulator Built-in)/Waterproof M12 Connector	DC 9~36V (Isolated DC-DC Voltage Regulator Built-in)/Waterproof M12 Connector
Power Consumption	Operation/Power Saving Below 18W	Operation/Power Saving.: Below 35W
Touch Panel	Projected Capacitive Touch Panel with 10 Multi Touch Points,	Projected Capacitive Touch Panel with 10 Multi Touch Points
	Micro USB Port (M12 Connector)	Micro USB Port (M12 Connector)
	Plug and Play for Windows XP/7/8/10/11, Linux, Driver for Mac, Android	Plug and Play for Windows XP/7/8/10/11, Linux, Driver for Mac, Android
Key Control	Power on/off with LED, Menu, Select, Adjustment	Power on/off with LED, Menu, Select, Adjustment
Operating Temperature	-20~70°C	-20~70°C
Storage Temperature	-30~80°C	-30~80°C
Relative Humidity	10%~90%(Non-Condensing)	10%~90%(Non-Condensing)
Accessories	1×3m Power Cable, 1×3m Micro USB Cable, 1×3m HDMI Cable	1×6m Power Cable, 1×6m Micro USB Cable, 1×6m HDMI Cable

SXT-12W Dimensions



SXT-16W Dimensions

