

# SEA-PDD2

## T-CLASS



Our Vision is Your Vision



SERIES

## SEA-PDD2 - T20

The SEA-PDD2-T20 Series is an high performance 1U LCD display drawer sporting a 17" or 19" LCD Monitor or optional 17.3" wide aspect LCD monitor. When needed the monitor slides out and the display portion of the monitor rotates up. You can adjust the monitor in almost any position from 0 to 125 Degrees. The Heavy-Du-ty Torque hinge holds it in place. Integrated Friction slides along with adjustable mounting arms allow installation in any standard 19" Rack enclosure. The drawer is held closed with a keyed cam lock or thumb screws.



### FEATURES

- A** LED Backlit LCDs  
Available in 17.1", 17.3", 19" each size is available in HighBright
- B** Front Face  
Options include handles, speakers, locks, and thumbscrews
- C** Mounting Arms  
Adjustable configuration
- E** Heavy Duty Torque Hinge
- F** Integrated Slides  
Military Grade Friction Slides add infinite stopping positions

### WHY CHOOSE THE SEA-PDD2-U20?

- All Aluminum Construction
- Customizable Modular Design
- Compact enclosure for Transit Case and Mobile applications.
- Pivoting Display Drawer
- 0-125 Degree Pivot
- Undermount Design
- Integrated Slides With Mounting Brackets

### VIDEO CONTROLLERS

- **V25X Embedded Controller**
  - Max Resolution: 1920 x 1200
  - Input Options Available: VGA, DVI,
  - Audio: Optional
- **V29X Embedded Controller**
  - Max Resolution: 1920 x 1200
  - Input Options Available: VGA, DVI,
  - Audio: Optional
- **V33X Controller**
  - Max Resolution: 1920 x 1200
  - Input Options Available: VGA, HDMI, Display Port, Audio, Optional YPbPr

Additional Controller Options Available

### LCD DETAILS

#### 173W FHD 1920 x 1080 (Max Res)

- 17.3" Wide LED Backlit LCD w/ Anti-Glare
- Viewing Angles: 80L/80R/60U/80D
- Contrast Ratio: 600:1
- Brightness: 400 NITS
- Response Time: 20ms
- Operational Temp: 0-70c
- 173W-Optional High Bright: 1000 nits

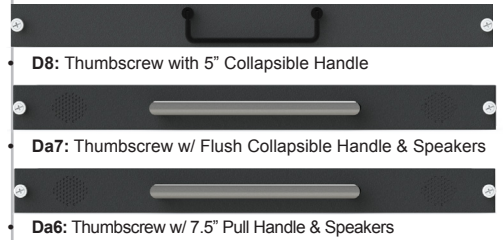
#### 17L SXGA 1280 x 1024 (Max Res)

- LED Back Light
- Viewing Angles: 85/80/60/80
- Contrast Ratio: 800:1
- Response Time: 15ms
- Brightness: 350 nits
- Operational Temp: -30-85c
- 17L-Optional High Bright: 1000 nits

#### 19L SXGA 1280 x 1024 (Max Res)

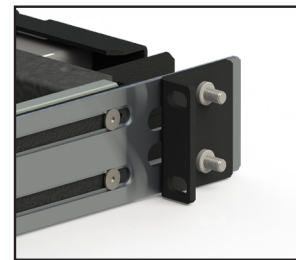
- 19" LED BackLit LCD
- Viewing Angles: 89/89/89/89
- Contrast Ratio: 1000:1
- Brightness: 700 NITS
- Response Time: 12.5ms
- Operational Temp: 0-50c
- 19HB - Optional High Bright: 1600 nits

### FRONT FACE OPTIONS



Additional Front Face Options Available

### TRANSIT CASE ARMS



**S** Mechanical drawings and 3D Solid Models are available upon request. Contact your sales representative for details.

### SPECIFICATIONS

- Dimensions: 19" W x 1.75" H x 12" D min.
- Weight: 32
- Power Consumption: 35W

Values are approximate and vary based on configuration

SERIES:	DISPLAY:	CONTROLLER:	FRONT FACE:
SEA_PDD2-T20	17L	V25x	D8
	└─┬─┘	└─┬─┘	└─┬─┘
	17HB, 19L, 19HB, 173W	V29x, V33x	D (Face) 1-8 (Handles)

Custom Options Available On All Seatronx Models