

# Multi Position Touch Screen SEA-MPTS-40

## THRUPUT

*Next generation Multi Position Touch Screen and video processing technology, renders up to four videos, and allocates touch inputs to each source at the same time.*

- All input and output resolutions up to 3840 x 2160.
- 4 x sources, any source, anywhere.
- Composite display: Cut, crop and stack sources, with transparent overlay.
- Instant changeover between sources.
- Automatic touch screen allocation to displayed sources.
- Independent off-screen and on-screen controls with transparency to prevent any data being obscured.

### Perfect rendering

The Thruput SEA-MPTS generates an 8 megapixel video stream for the new generation of 4K x 2K displays with HDMI and DVI compatible inputs.

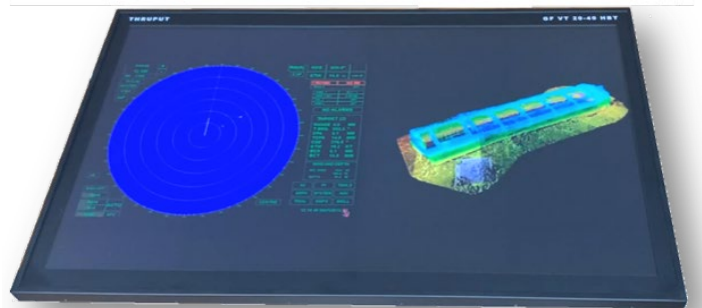
All inputs can be rendered as single screens, or processed to create composite video presentations.

Touch inputs are automatically allocated to the displayed sources.

### Full screen mode



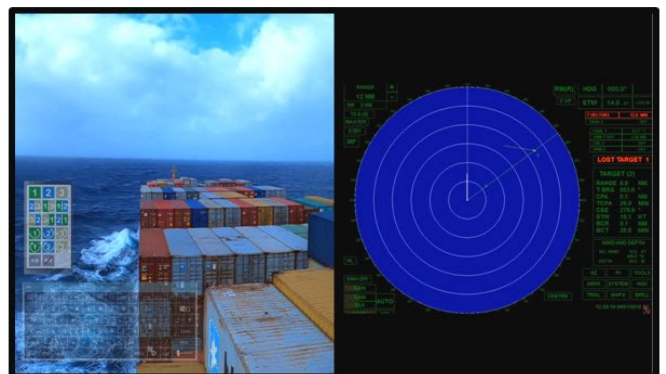
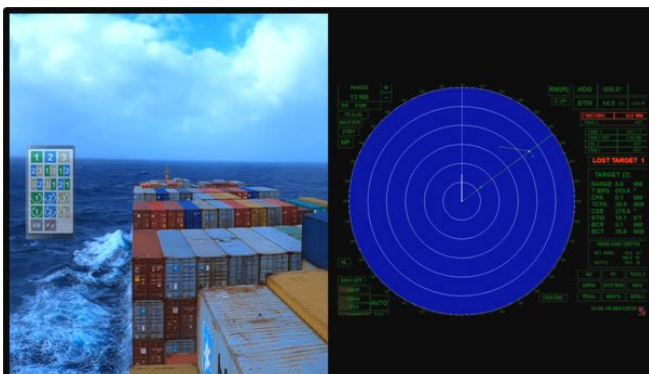
### Dual screen mode



### New possibilities

The large size and high resolution of new displays creates new possibilities for information display.

- View one 4K x 2K image across the entire screen.
- View several channels of information on one screen rather than on many separate monitors.
- Embed screens from a mix of UNIX, LINUX, Solaris, Windows or other sources.



On screen touch controls and keyboards with transparency

# Multi Position Touch Screen SEA-MPTS-40

## THRUPUT

### Safety

Thruput True-pixel graphics processing:

- Directly maps input pixel to LCD pixel.
- Avoids any zoom engines or pixilation chipsets.
- All data channels are isolated and data from one channel cannot pass to another.
- Directly maps Touch inputs to the correct display source.

### Green solution

The SEA-MPTS does not use any hazardous materials, and is:

- Fully RoHS compliant, with ultra-low power consumption.
- Typically 15W in normal operation.

### Specification

Resolution	3840 x 2160
Inputs	<ul style="list-style-type: none"> <li>• 4 off all up to 3840 x 2160 @ 60 Hz</li> <li>• Touch input via USB to each data source.</li> </ul>
Outputs	40" GF VT 20 40 HBT Touch screen with LED backlighting.
Function	<ul style="list-style-type: none"> <li>• Set input and output resolutions.</li> <li>• Synchronise all received data.</li> <li>• Create composite output of any or all inputs</li> <li>• Cut, crop, position and stack each input.</li> <li>• Set transparency colours for each input.</li> <li>• Allocate touch inputs to the displayed screens.</li> </ul>
Power	Supports 12 V DC or Universal input voltage, worldwide use. Typically below 15W (normal operation).
Noise	0 dB (silent operation)
Weight	21 Kg
MTBF	127,000 hours
Compliance	CE, FCC and ROHS.
HMI	<ul style="list-style-type: none"> <li>• External control panel or on screen control panel and keyboard with transparency.</li> <li>• Synchronized switching of trackball &amp; keyboard.</li> </ul>

