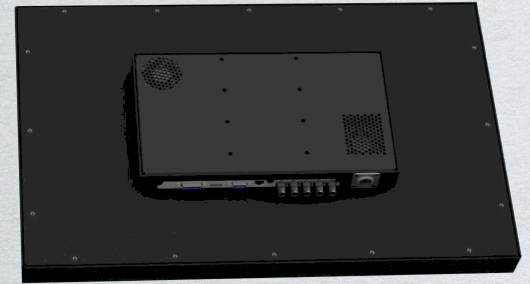
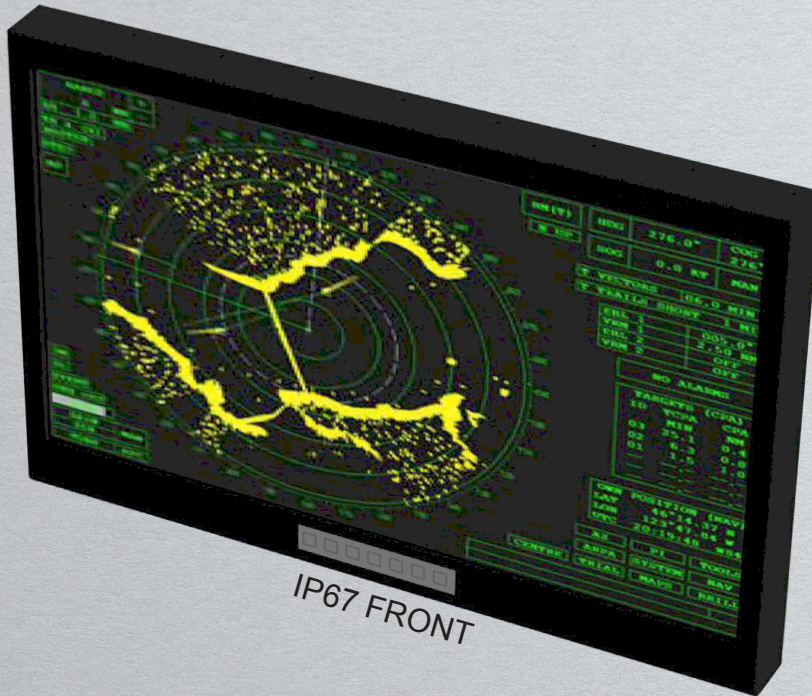


# SEA-MIL-U Series

Military Monitor Universal Mount: 24", 27", 30", 32"



Our Vision is Your Vision



IP53 Back

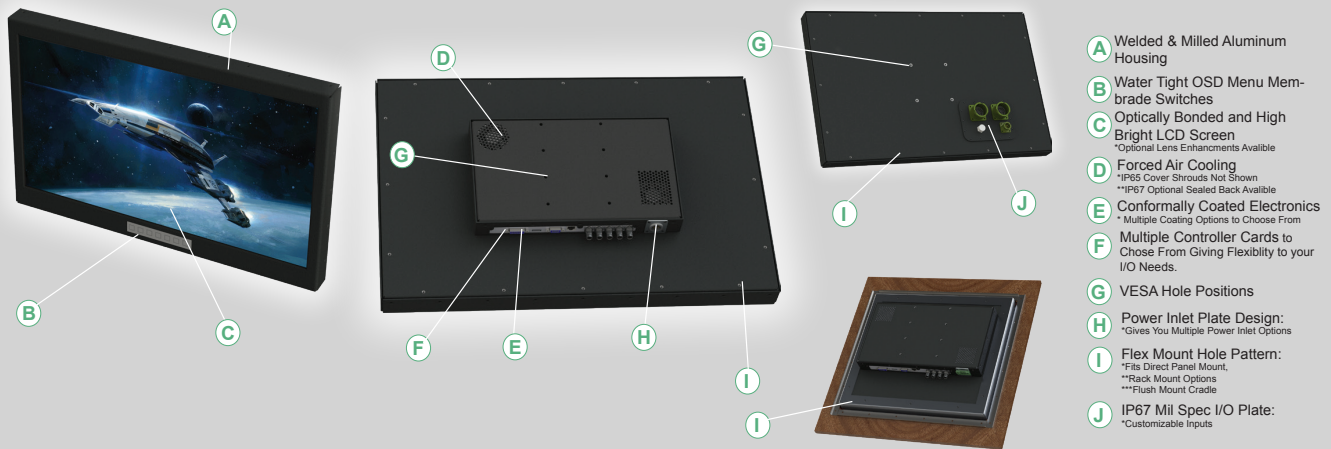


IP67 Back

## SEA-MIL-U Series Military Monitor

Our Military Monitor was designed from the ground up to meet the rugged environmental requirements. It can be built with an IP67 Front Face with IP53 Back for general rugged use or full IP67 for sealed applications. It comes standard with an Optically Bonded Lens. It has optional High Bright Backlit LCD Monitor, ITO, PCAP touch, Heated Lens, and NVIS Backlight system. It was design to meet many MIL Spec standards off the shelf but if you have a specific standard you need met, we can customize it to any level. It is Built from 5052H32 and 6061T6 Aluminum that is Laser Cut and Milled to a precise standards. The internal Components are Conformally Coated and each connection is protected with dielectric grease to prevent corrosion. Its Universal Mount system includes VESA, RACK, Panel Mount and Flush Mounting options. Exacting Precision has gone into every design feature of this unit to make it one of the best monitors in the industry, and worthy of becoming a true Military Monitor.

## MOUNTING FEATURES



- A** Welded & Milled Aluminum Housing
- B** Water Tight OSD Menu Membrane Switches
- C** Optically Bonded and High Bright LCD Screen  
\*Optional Lens Enhancements Available
- D** Forced Air Cooling  
\*IP65 Cover Shrouds Not Shown  
\*\*IP67 Optional Sealed Back Available
- E** Conformally Coated Electronics  
\* Multiple Coating Options to Choose From
- F** Multiple Controller Cards to Choose From Giving Flexibility to your I/O Needs.
- G** VESA Hole Positions
- H** Power Inlet Plate Design:  
\*Gives You Multiple Power Inlet Options
- I** Flex Mount Hole Pattern:  
\*Flts Direct Panel Mount,  
\*\*Rack Mount Options  
\*\*\*Flush Mount Cradle
- J** IP67 Mil Spec I/O Plate:  
\*Customizable Inputs

## LCD DISPLAY

### FEATURES

- RUGGED ALL ALUMINUM CONSTRUCTION
- HIGH BRIGHT DAYLIGHT VIEWABLE
- OPTICAL BONDED COVER GLASS
- IPXX DESIGN OPTIONS
- UNIVERSAL MOUNT DESIGN TECHNOLOGY

### OPTIONS

- MULTIPLE LENS ENHANCEMENT AVAILABLE INCLUDING: ITO LENS, HEATED GLASS, PCAP TOUCH, NVIS BACKLIGHT
- OPTIONAL FLEX MOUNT LITS AVAILABLE
- CHOICE OF CONFORMAL COATING TECHNIQUES

### LCD MODULES

#### 24 XGA 3840x2160 (Max Res)

- 23.8" LED BACKLIT LCD
- VIEWING ANGLES: 89/89/89/89
- CONTRAST RATIO: 1000:1
- BRIGHTNESS: 300 NITS (900+ NITS M2/M3)
- RESPONSE TIME: 14MS
- SURFACE FINISH: AR/AG COATED 3MM OPTICALLY BONDED LENS
- OPTICAL BONDING
- ITO EMI LENS ENHANCEMENT
- NVIS NIGHT VISION MODE (M3)

#### 27 WQHD 2560x1440 (Max Res)

- 27" LED BACKLIT LCD
- ITO EMI LENS ENHANCEMENT
- VIEWING ANGLES: 89L/89R/89U/89D
- CONTRAST RATIO: 1000:1
- BRIGHTNESS: 350 NITS (1000+ NITS M2/M3)
- RESPONSE TIME: 8MS
- SURFACE FINISH: AR COATED 3MM OPTICALLY BONDED LENS
- ITO EMI LENS ENHANCEMENT
- NVIS NIGHT VISION MODE (M3)

#### 30 WQXGA 2560x1600 (Max Res)

- 30" LED BACKLIT LCD
- ITO EMI LENS ENHANCEMENT
- VIEWING ANGLES: 89L/89R/89U/89D
- CONTRAST RATIO: 1000:1
- BRIGHTNESS: 350 NITS (1000+ NITS M2/M3)
- RESPONSE TIME: 7MS
- SURFACE FINISH: AR COATED 3MM OPTICALLY BONDED LENS
- ITO EMI LENS ENHANCEMENT
- NVIS NIGHT VISION MODE (M3)

#### 32 UHD 3840x2160 (Max Res)

- 32" LED BACKLIT LCD
- ITO EMI LENS ENHANCEMENT
- VIEWING ANGLES: 89L/89R/89U/89D
- CONTRAST RATIO: 1000:1
- BRIGHTNESS: 350 NITS (1000+ NITS M2/M3)
- RESPONSE TIME: 8MS
- SURFACE FINISH: AR COATED 3MM OPTICALLY BONDED LENS
- ITO EMI LENS ENHANCEMENT
- NVIS NIGHT VISION MODE (M3) NVIS NIGHT VISION MODE (M3)

## VIDEO CONTROLLERS

- V28x High End 4K Controller (Production)  
Max Resolution: 4096 x 2160  
Input Options Available: HDMI 2.0, HDMI1.4, DVI-I Dual Link or Display Port 1.2, VGA. and RS-232, For command and Control
- V34x High End 4K Controller (Production)  
Max Resolution: 4096 x 2160  
Input Options Available: HDMI 2.0, HDMI1.4, DVI-I Dual Link or Display Port 1.2. Integrated Ethernet, RS-232, and I2C For command and Control
- V36x Mid Grade 4K Controller (New)  
Max Resolution: 4096x2160 60Hz  
Input Options Available: HDMI 2.0, Display Port 1.2, RS-232 for Command and Control.

## SPECIFICATIONS

- Dimensions: Varies
- Weight: Varies
- Power Consumption: ~80 to ~110 Watts
- Shipping Weight: Varies
- Shipping Dimensions: Varies

## ORDERING INFORMATION

Series	Display Size	Controller
SEA-MIL-U	24	V28x
	24 = 23.8"	V28x
	27 = 27"	V34x
	30 = 30"	V36x
	32 = 32"	