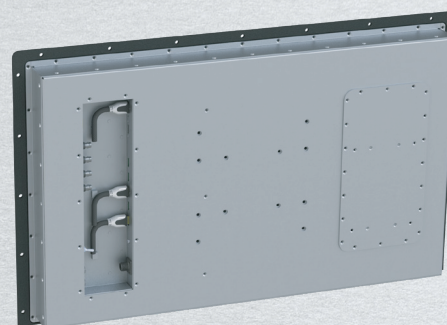


RMD-32-P

32" Rugged Military Panel Mount Display



Our Vision is Your Vision



Description

Our RMD-32-P Series was designed from the ground up to meet the rugged environmental requirements. It can be built with an IP67 Front Face with IP53 Back for general rugged use or full IP67 with Mil Spec Circular Connectors for sealed applications. It comes standard with an EMI ITO Lens. It has optional Optical Bonding and also High Bright Backlit LCD Monitor, With Optional Heated Lens, and NVIS Backlight system. It was Design To Meet (DTM) many MIL Spec standards off the shelf but if you have a specific standard you need met, We can customize it to any level. It is Built from 5052H32 and 6061T6 Aluminum that is Laser Cut and Milled to a precise standard. The internal Components Can be Conformally Coated for an extra level of protection. Internal Cabling is Low Smoke Zero Halogen Teflon Cabling. Its Specifically Design for Panel Mount Applications with Milled Aluminum front face that rises only a 1/2" off its mounting surface.

Key Features

- Rugged All Aluminum Construction
- Includes Rear VESA Pattern for add-on equipment such as Fiber Channel
- EMI ITO Cover Glass
- IP67 Front Face Design
- 6061 T6 Milled Aluminum Front Face

Options

- Multiple Lens Enhancement available Including: Heated Glass, NVIS Backlight
- High Bright Daylight Viewable option
- Optional conformal Coating
- Optional Optical Bonding for Grade A Shock

Video Inputs Available*

- | | |
|---------|----------------|
| • VGA | • Composite |
| • DVI | • S-Video |
| • HDMI | • SDI |
| • YPbPr | • Display Port |

Specifications

- Dimensions: 20.28" x 32.48" x 2.9"
- Weight: ~85 Lbs
- Power Consumption: ~130 Watts
- Shipping Weight: TBD
- Sipping Dimensions: TBD

Values are approximate and vary based on configuration

Video Controllers

V38x High End 4K Controller

- Max Resolution: 4096 x 2160 60Hz
- Input Options Available: HDMI 2.0 x1, HDMI1.4 x3, Display Port 1.2. RS-232, OSD, For command and Control, and IR Remote. Integrated Multi View (PIP, PBP, Quad View).
- Optional 3G or 6G SDI Interface can be Integrated

V36x Mid Grade 4K Controller

- Max Resolution: 4096x2160 60Hz
- Input Options Available: HDMI 2.0 x2, Display Port 1.2 x1, RS-232 and OSD for Command and Control. IR Remote

* Not all ports are available on all AD cards. Check I/O for each Video Controller Offered

LCD Options

OPTION-1

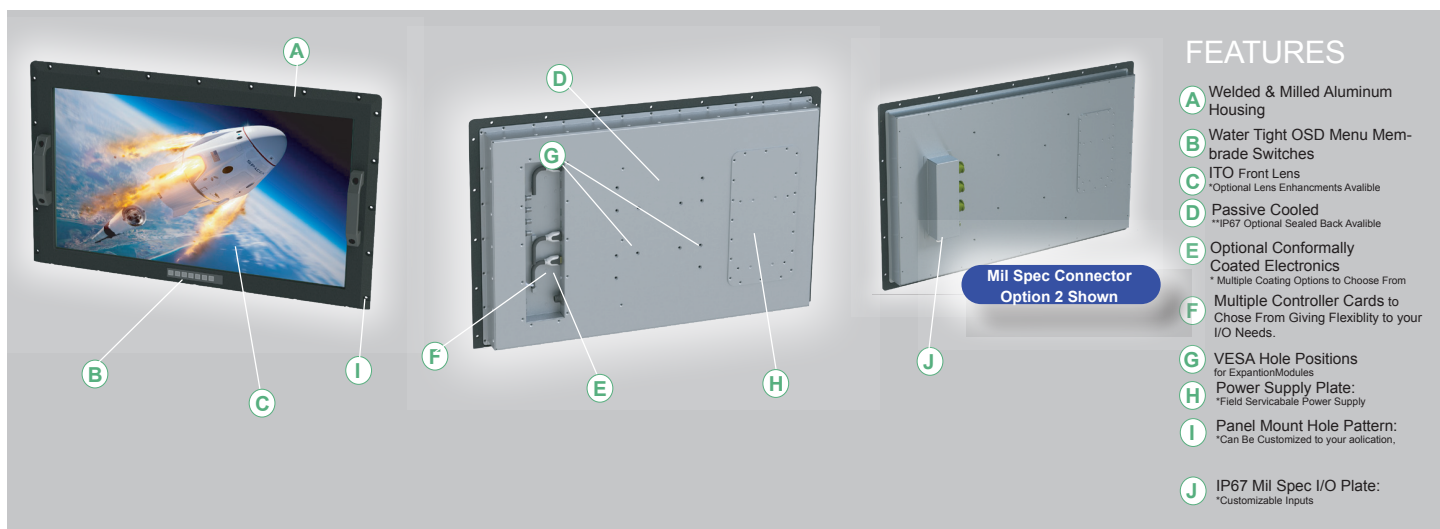
- 3840 x 2160 (Max Res)
- 32" LED Backlit LCD
- ITO EMI Lens Enhancement
- Viewing Angles: 89L/89R/89U/89D
- Contrast Ratio: 3000:1
- Brightness: 400 NITS
- Response Time: 15/5ms
- Color: 1.08B, 10 Bit
- Color Gamut: 97% NTSC
- Surface Finish: AR/AG Coated Laminated Optically Bonded Lens

OPTION-2

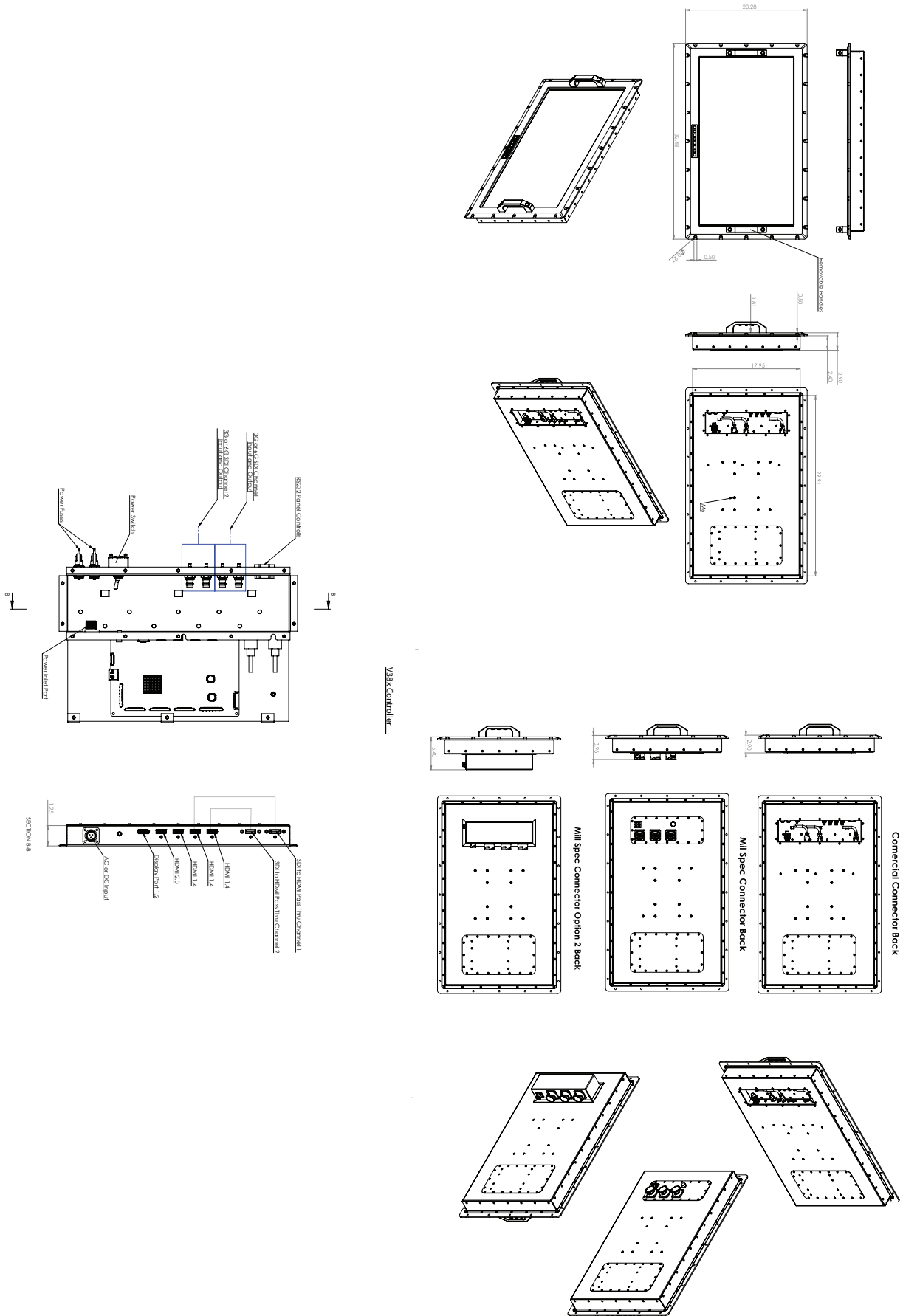
- 3840 x 2160 (Max Res)
- 32" LED Backlit LCD
- ITO EMI Lens Enhancement
- Viewing Angles: 89L/89R/89U/89D
- Contrast Ratio: 3000:1
- Brightness: 1000 NITS
- Response Time: 15/5ms
- Color: 1.08B, 10 Bit
- Color Gamut: 97% NTSC
- Surface Finish: AR/AG Coated Laminated Optically Bonded Lens

OPTION-3

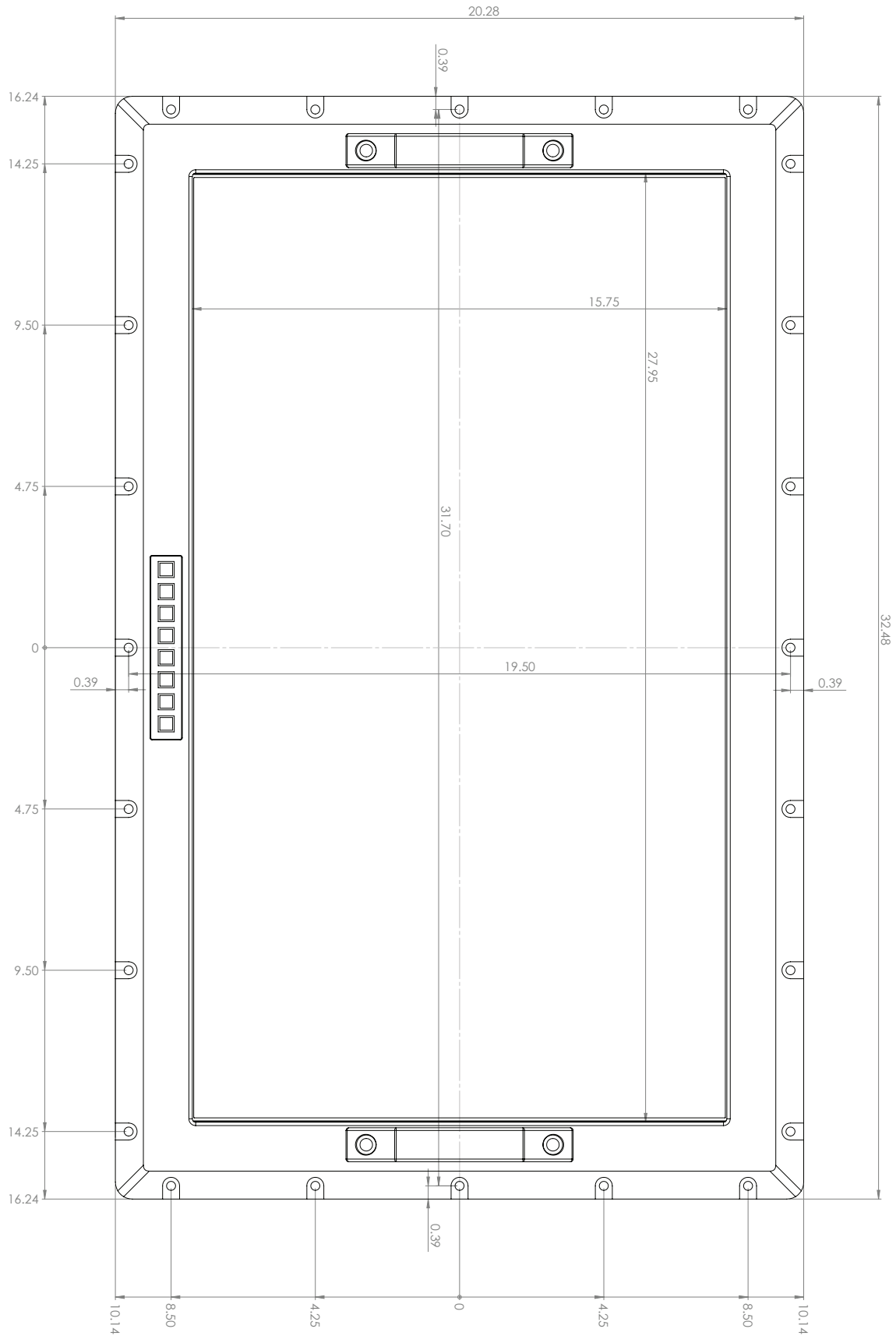
- 3840 x 2160 (Max Res)
- 32" LED Backlit LCD
- ITO EMI Lens Enhancement
- Dual Backlight NVIS and Daylight
- Viewing Angles: 89L/89R/89U/89D
- Contrast Ratio: 3000:1
- Brightness: 400 NITS
- NVIS: B Mode
- Response Time: 15/5ms
- Color: 1.08B, 10 Bit
- Color Gamut: 98% NTSC
- Surface Finish: AR/AG Optically Bonded Lens



Mechanical Drawings



Mechanical Drawings



MIL SPECIFICATIONS

Panel Can be DTM (DESIGNED TO MEET) the following MIL Standards. Full Mil Spec Requirements must be disclosed during the quoting process to pick the correct components and Enhancement Process to meet your MIL Spec Requirements.

TERMS & CONDITIONS

Seatronx only Guarantees our Units Will pass Mil-Spec Testing when Mil-Spec Testing is purchased through Seatronx and its partnering 3rd party independent Labs.

AVAILABLE MIL STANDARD DESIGN TO MEET OPTIONS

Operational Temperature Range: MIL-STD-810F/G, -10C to +50C (*Method and Procedures TBD)

Storage Temperature: MIL-STD-810F/G, -30C to +60C (*Method and Procedures TBD)

Humidity: MIL-STD-810F/G, (*Method and Procedures TBD)

Altitude: MIL-STD-810F/G, (*Method and Procedures TBD)

Vibration: MIL-STD-810F/G, -167, or -516.2 (*Method and Procedures TBD)

Shock: MIL-STD-810F/G, -901E Grade B, or -901E Grade A (*Method and Procedures TBD)

EMI: MIL-STD-461F/G CE102, RE101, RE102, CS101, CS114, CS116, RS101, and/or RS103

*MIL-STD, Methods, and Procedures are based on your required needs, contact one of our knowledgeable Sales Engineers to help to Spec in a unit to meet your required needs.

