

2MP 20X High Temperature CCTV Camera

Explosion Proof Mark

Ex II 2G Ex db op is IIC T6 Gb
II 2D Ex tb op is IIIC T80[°] C Db IP68
IP66

Explosion-proof design

the camera has passed international ATEX certifications, and can be used in gas and dust hazardous scenarios

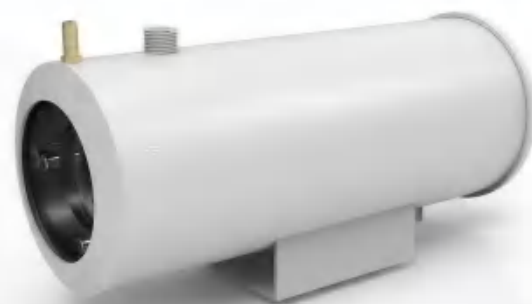
Material

316L stainless steel enclosure and anti-corrosion spray treatment, protecting the camera from damage caused by sparks or corrosive materials

Ingress Protection

IP68/IK08 water resistant and vandal proof, preventing water ingress for outdoor use

Key Features



KDT01 high-temperature water-cooled Camera which is made of double-layer stainless steel tubes and cast aluminum end caps. The circulating water achieves cooling effect through the cooling interlayer, and compressed air can be introduced into the front cover to form an air curtain to play a dustproof role. The water-cooled housing has good anti-corrosion and anti-dust ability, and can be used in environments with high temperature and dusty corrosive gases.

- Ambient temperature of water-cooled shield: 0C~+300C.
- Compressed air temperature: ≤40C; circulating water temperature: ≤35C.
- Pressure: 0.1~0.2Mpa.
- Flow: 0.1~0.2m³/min.
- The protection capacity of the water-cooled shield reaches the IP66 standard.

Thermal imaging parameters

Mechanical		
Housing	Stainless steel 304	
IP	IP66	
Cable Thread Hole	G3/4	
Electrical		
Voltage	DC12V or PoE or AC100V-240V	
Power	15W	
Ambient		
Cooling Way Temperate Resist Cooling Media Pressure	KDT01	KDT02
	Compressed air	Circulate running water
	-25 to + 150C	0 to +250C
Air flow: 0.4- 1.0L/S, less than 35C	2800 liter per hour	
Air Output At the Front of Window	Support	Support
Camera		
Image Sensor	1/2.8" progress scan CMOS	
Effective Pixel	2MP	
Min. Illumination	Color 0.01Lux	B/W: 0.005Lux
Day&Night	Auto/ Color/ BW	
Optical Zoom	20X,5.4- 108MM	
Effective Pixels	1920*1080	
Angle of View	Horizontal 50.2-2.9 (wide -tele) Vertical 37.9-2. 1	
MOD	10mm~1500mm(wide -tele)	
General		
Size	382*140*183mm	
Housing Inner Size	260*75*75mm (L*W*H)	
Weight	5kg	
Mounted	wall, pole	
Wall Bracket	Stainless Steel	

Application Scenarios



Oil & Gas



Refineries & Fuel Depots



Surveillance & Security



Chemie & Pharma



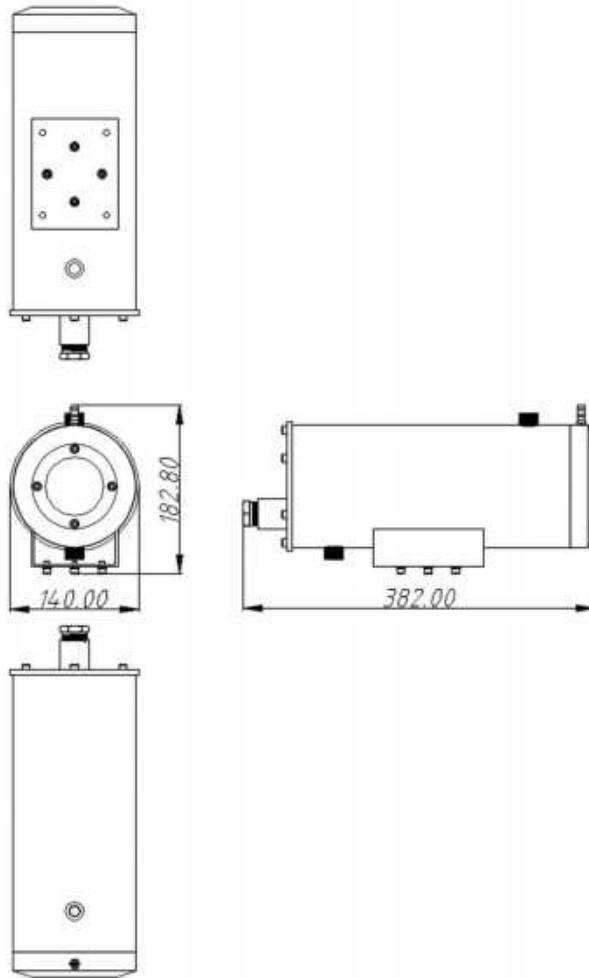
Oil tankers

Group II (Gas & Dust)	ATEX / IECEx / EAC-Ex				
Zone	0	1	2	21	22
Application	✗	✓	✓	✓	✓

Group I (Mining)	ATEX / IECEx..	
Category	Ma	Mb
Application	✗	✗

Other application areas : desert drill sites , offshore rigs , mechanical engineering ,biogas plants , military, electric power, hydraulic power, railway, metallurgy, natural gas extraction, drilling platform, aerospace, marine, armed police, border defense ,vessels ,fireworks production ,ports etc

DIMENSIONS



Accessories



Bracket



Ex-Proof Hose



Ex-Proof Junction Box