

2MP 46X Explosion Proof Anti-Corrosion Starlight Zoom Bullet Camera

Explosion Proof Mark

Ex II 2G Ex db op is IIC T6 Gb
II 2D Ex tb op is IIIC T80° C Db IP68
IP66

Explosion-proof design

the camera has passed international ATEX certifications, and can be used in gas and dust hazardous scenarios

Material

316L stainless steel enclosure and anti-corrosion spray treatment, protecting the camera from damage caused by sparks or corrosive materials

Ingress Protection

IP68/IK08 water resistant and vandal proof, preventing water ingress for outdoor use



Key Features

2MP



- Support LVDS and network
- Supports deep algorithm learning to improve the performance of intelligent event algorithms
- Resolution up to 2MP (1920×1080), Output Full HD: 1920×1080@30fps Live Image.
- Starlight Low Illumination, 0.001Lux/F1.8(color), 0.0005Lux/F1.8(B/W), 0 Lux with IR
- 46X Optical Zoom, 16X Digital Zoom
- ICR automatic switching, 24 hours day and night monitoring
- Excellent low illumination effect; Support forecast focus, clear pictures; Support 3A control (auto white balance, auto exposure, auto focus)
- Support Backlight Compensation, Automatic Electronic Shutter, adapt to different monitoring environment
- Support 3D Digital Noise Reduction, High light Suppression, Electronic Image Stabilization, 120dB Optical Wide Dynamic
- Supports optical fog transmission, which greatly improves the foggy image effect

Specification

Camera

Image Sensor	1/2.8" Progressive Scan CMOS
Minimum Illumination	Color :0.001 Lux @(F1.8,AGC ON) ;B/W:0.0005Lux @(F1.8,AGC ON)
Shutter	1/25s to 1/100,000s; Supports delayed shutter
Autoiris	DC
Day/Night Switch	IR cut filter
Digital Zoom	16X
Video Output	LVDS

lens

Focal Length	7-322mm, 46X Optical Zoom
Aperture Range	F1.8-F6.5
Horizontal Field of View	42-1 ° (wide-tele)
Minimum Working Distance	100mm-1500mm (wide-tele)
Zoom Speed	Approximately 5s(optical lens, wide to tele)

Image (Maximum Resolution: 1920 × 1080)

Main Stream	50Hz : 25fps (1920 × 1080, 1280 × 960, 1280 × 720) ; 60Hz : 30fps (1920 × 1080, 1280 × 960, 1280 × 720)
Image Settings	brightness, contrast, sharpness adjusted by IE/ Client
BLC	Support
Exposure Mode	AE / Aperture Priority / Shutter Priority / Manual Exposure
Focus Mode	Auto Focus / One Focus / Manual Focus / Semi-Auto Focus
Area Exposure / Focus	Support
Optical Fog	Support
Image Stabilization	Support
Day/Night Switch	Automatic, manual, timing, alarm trigger
3D Noise Reduction	Support

NetWork

Storage Function	Support USB extend Micro SD / SDHC / SDXC card (256G) disconnected local storage, NAS (NFS, SMB / CIFS support)
Protocols	TCP/IP, ICMP,HTTP,HTTPS,FTP,DHCP,DNS,RTP,RTSP,RTCP,NTP,SMTP,SNMP, IPv6
Interface Protocol	ONVIF(PROFILE S,PROFILE G)

Smart Features

Intelligent Computing Power	1T
-----------------------------	----

Interface

External Interface	36pin FFC (Network port, RS485, RS232, CVBS, SDHC, Alarm In/Out, Line In/Out, power),LVDS
--------------------	---

General

Power	DC 12V±25% AC100-240V optional
Dimensions (L × W × H)	428*183*171mm
Net Weight	≤5kg
Material	Stainless Steel 316L
Working Environment	-40°C ~ 60°C , Humidity: ≤100% RH (non-condensing)
Storage Environment	-40°C ~ 60°C , Humidity: ≤100% RH (non-condensing)
Surge Protection	2KV
Ingress Protection	IP68
Inlet Hole	1 Entry hole G3/4"
Specification	
Installation Method	Wall or column platform installation

Approval

Protection	IK08 (IEC 62262:2002), IP68 (IEC 60529-2013)
------------	--

Explosion-Proof Protection

ATEX: II 2G Ex db IIC T6 Gb/ II 2D Ex tb IIIC T80°C Db IP68 IECEx: Ex db IIC T6 Gb /Ex tb IIIC T80°C Db IP68 ; For explosive gas atmospheres, the maximum surface temperature is 85°C; For flammable dust atmospheres, the maximum surface temperature is 80°C; IIC: for explosive gas atmospheres other than mines susceptible to firedamp ; For explosive gas mixture atmospheres: Zone 1, Zone 2, Zone 21, Zone 22.

Application Scenarios



Oil & Gas



Refineries & Fuel Depots



Surveillance & Security



Chemie & Pharma



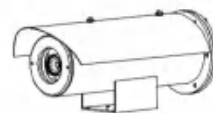
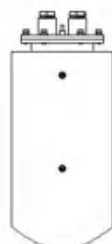
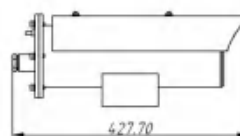
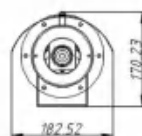
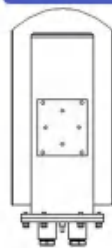
Oil tankers

Other application areas : desert drill sites , offshore rigs , mechanical engineering ,biogas plants , military, electric power, hydraulic power, railway, metallurgy, natural gas extraction, drilling platform, aerospace, marine, armed police, border defense ,vessels ,fireworks production ,ports etc

Group II (Gas & Dust)	ATEX / IECEx / EAC-Ex				
Zone	0	1	2	21	22
Application	✗	✓	✓	✓	✓

Group I (Mining)	ATEX / IECEx..	
Category	Ma	Mb
Application	✗	✗

DIMENSIONS



Accessories



Bracket



Ex-Proof Hose



Ex-Proof Junction Box